

# MODULE 9 L03

## Digestive System: Large Intestine Histology

Dr. Lisa Brinn  
[lbrinn@fiu.edu](mailto:lbrinn@fiu.edu)



# Large Intestine

- Subdivisions:

- ❖ Cecum

- Appendix

- ❖ Colon

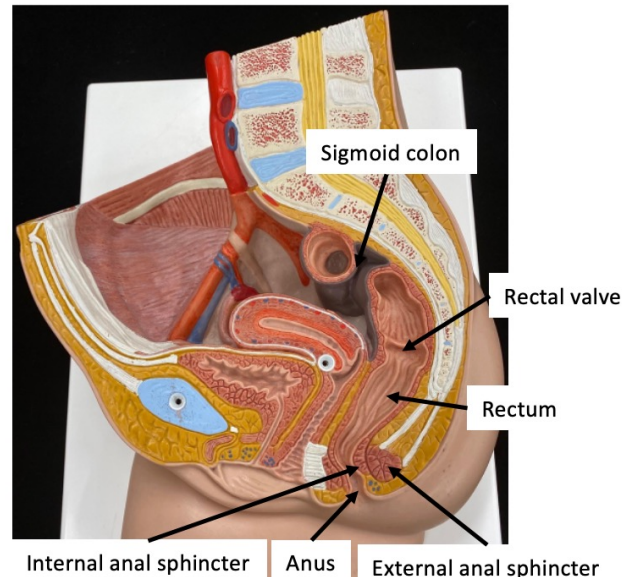
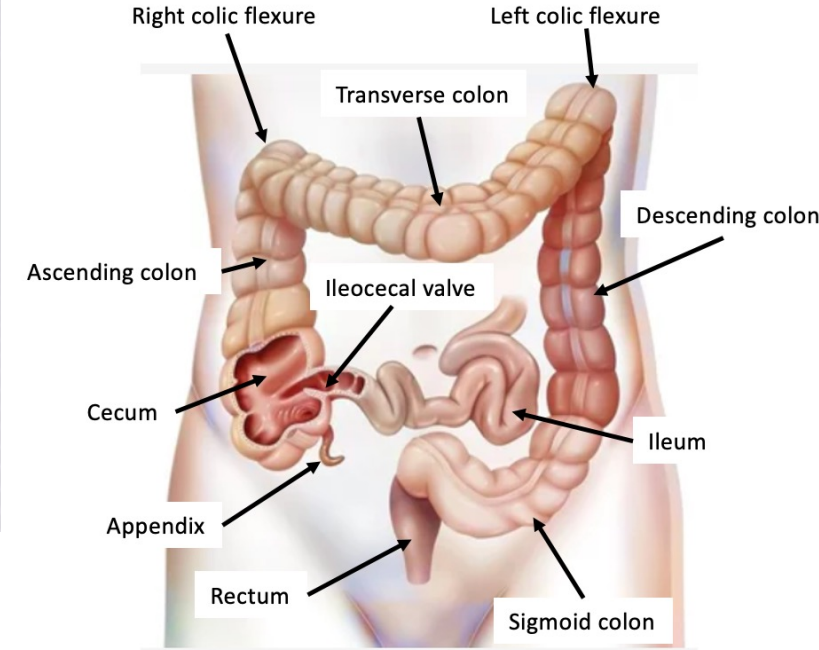
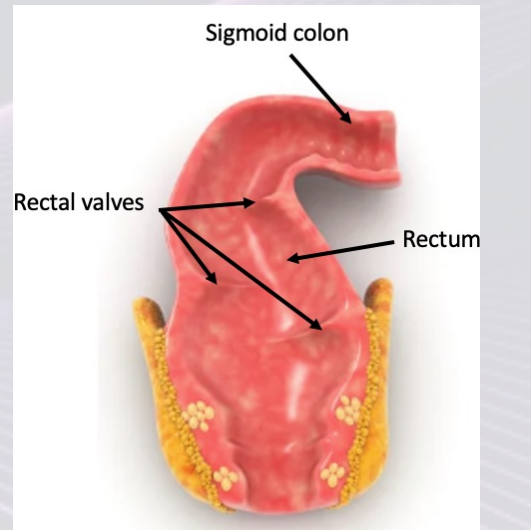
- Ascending
  - Right colic flexure (hepatic)
- Transverse
  - Left colic flexure (splenic)
- Descending
- Sigmoid

- ❖ Rectum

- Rectal valves

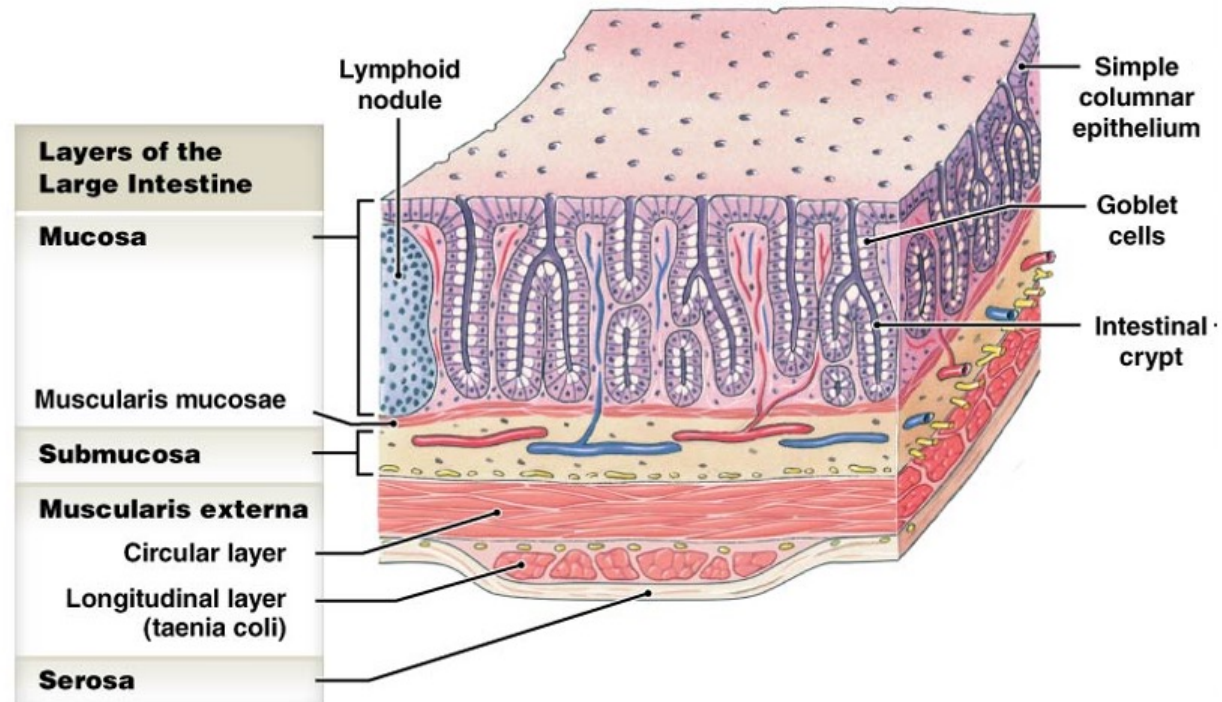
- ❖ Anal canal

- Anus
  - External anal sphincter
  - Internal anal sphincter



# Large Intestine Histology

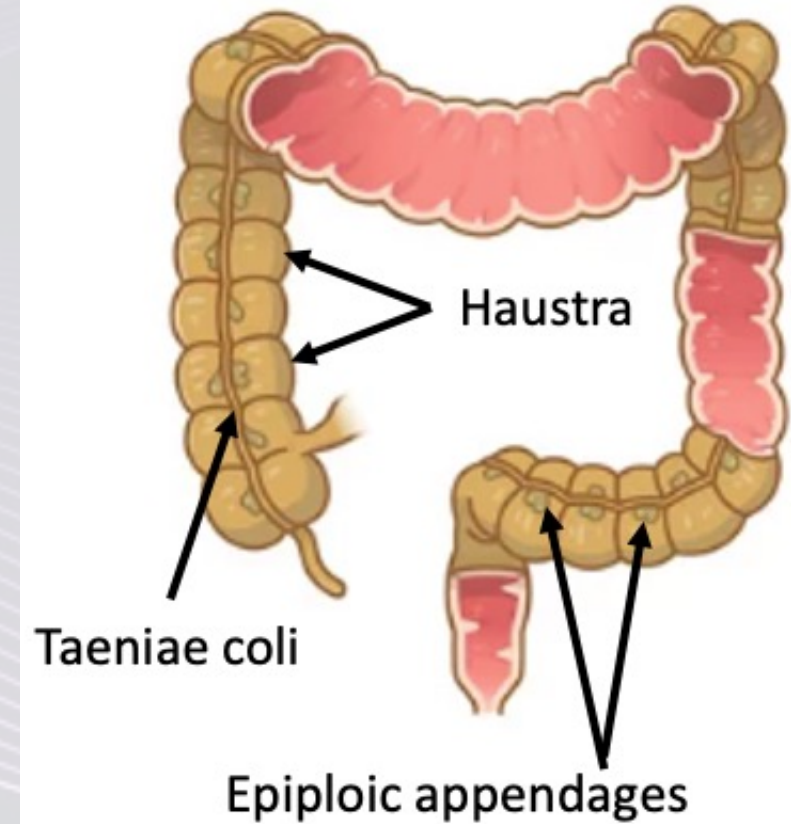
- Histology:
  - ❖ Mucosa
    - Lymphoid nodule
  - ❖ Submucosa
  - ❖ Muscularis externa
    - Circular muscle
    - Longitudinal muscle
      - Taenia coli
  - ❖ Serosa
- Nervous plexus
  - ❖ Myenteric plexus
  - ❖ Submucosal plexus





# Large Intestine Unique Features

- Taenia coli
  - ❖ Decreased longitudinal muscle layer
- Haustra
  - ❖ pouch-like structures
  - ❖ Help with digestion
- Epiploic appendages
  - ❖ Fat-filled sacs



# Lab Models

